

Watershed Based Funding (WBF)

Update on Local Government Engagement Process

BWSRs transition from the pilot program

Local Government Water Roundtable (LGWR)

- Minnesota Association of Counties
- Minnesota Association of SWCDs
- Minnesota Association of Watershed Districts

Watershed Based Funding (WBF)

Update on Local Government Engagement Process

History of the LGWR

2013 – Comprehensive Water Planning and Management Paper

2016 – Funding Workgroup Policy Paper

Statements:

- Watershed planning should occur at the 81 major watershed scale
- Exception is 7-County Metro; area not addressed (optional)
- Long term predictable state funding should be provided
- Incentives should be provided to share services and achieve efficiencies

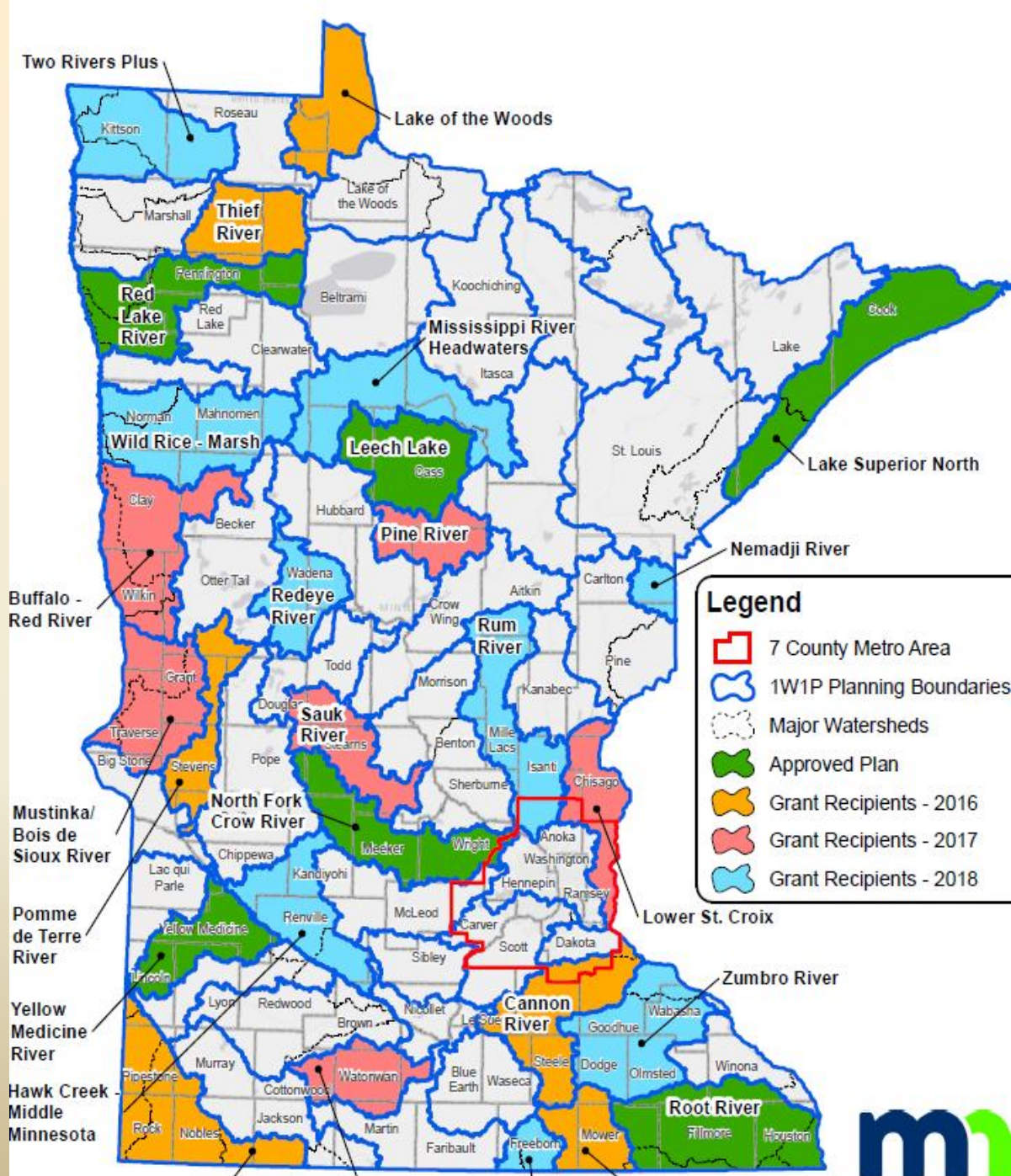
Watershed Based Funding

Update on Local Government Engagement Process

BWSRs transition from the pilot program

BWSRs WBF Policy Development Process:

- Metro Forums (complete)
- Feedback from pilot watersheds now implementing (complete)
- Workgroup meetings with LGWR staff and BWSR staff (complete)
- Meetings with LGWR Board (Jun/Jul)
- State agency and external stakeholders coordination (Jun/Jul)
- Open comment period (Jun/Jul)
- BWSR Committee review and Board adoption (Aug/Sep)



Watershed Based Funding

Update on Local Government Engagement Process

Items considered in work group meetings:

- Assurance Measures
- Watershed Based Funding Program Policy
- **Allocation Options**
- **Watersheds that Span both Metro and Non-Metro**

Watershed Based Funding

Update on Local Government Engagement Process

Allocation Options:

Two funding pools established under Pilot Program

– Non-Metro Area

- ~ \$3.1M in FY18-19
- Anticipated to increase significantly in FY20-21

– Metro Area

- ~ \$5.6M in FY18-19
- Not anticipated to increase in FY20-21

Watershed Based Funding

Update on Local Government Engagement Process

Allocation Options Discussed for FY20-21:

1. \$250K plus % of private land (pilot)
- 2. \$250K plus 50% private land 50% total area**
3. \$250K plus 50% private land 50% resource density
4. \$250K base plus 75% private land plus 25% water resource density

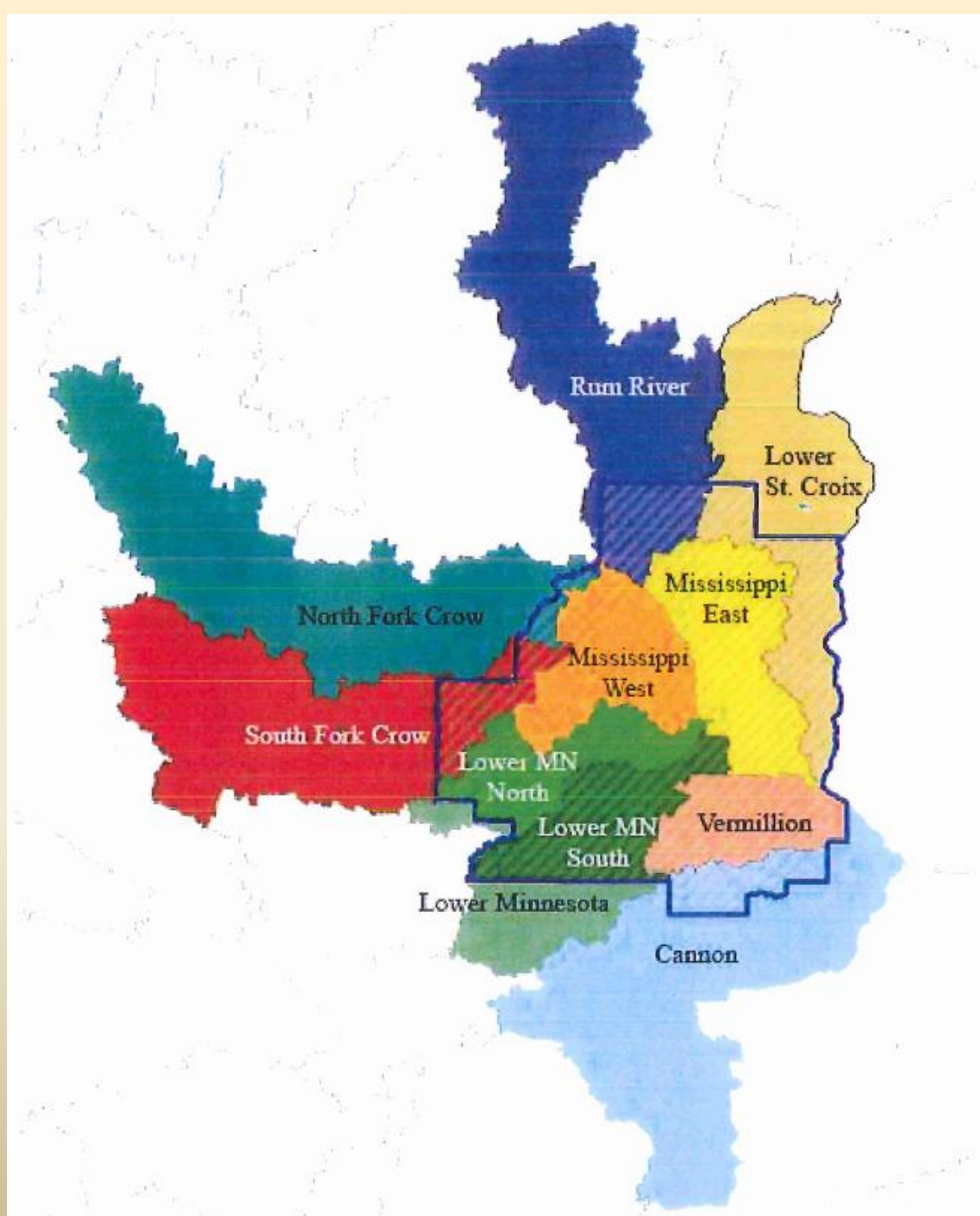
Watershed Based Funding

Update on Local Government Engagement Process

Watersheds that Span both Metro and Non-Metro:

Again, two allocation pools established under the Pilot Program - One for Metro area and one for non-metro area.

How do you fund watersheds that span both Metro and Non-Metro?



Watershed Based Funding

Update on Local Government Engagement Process

Watersheds that Span Metro/Non-Metro:

Discussions to continue – no single recommendation developed!

- Maintain flexibility but no “double dipping” from allocation each pool.
- Watershed plan equivalents should be considered.
- Metro/non-metro should not compete for same pool of funds.
- Funding decision should provide incentive for collaboration with local governments outside of metro area.

Watershed Based Funding

Update on Local Government Engagement Process

Watersheds that Span both Metro/Non-Metro:

Options:

- 1 allocation to entire watershed
- 1 allocation; to entire watershed based on metro area and entire watershed
- **2 allocations; 1 to metro area and 1 to non-metro area**
- 2 allocations; 1 to metro area and 1 to entire watershed

Watershed Based Funding

Update on Local Government Engagement Process

Transitioning from a pilot program

BWSRs WBF Policy Development Process:

- Metro Forums (complete)
- Feedback from pilot watersheds now implementing (complete)
- Workgroup meetings with LGWR staff and BWSR staff (complete)
- Meetings with LGWR Board (Jun/Jul)
- State agency and external stakeholders coordination (Jun/Jul)
- Open comment period (Jun/Jul)
- BWSR Committee review and Board adoption (Aug/Sep)